

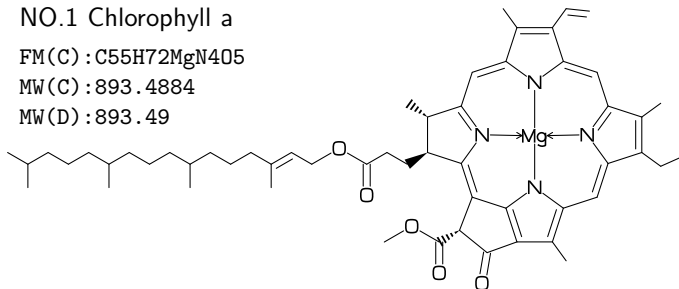
MCF example for luamplib(Lua \LaTeX)

Author : Akira Yamaji Date : March 26, 2017
Located at : <http://www.ctan.org/pkg/mcf2graph>

FM(C) : molecular formula calculated by mcf2graph
MW(C) : molecular weight calculated by mcf2graph
MW(D) : molecular weight from literature data

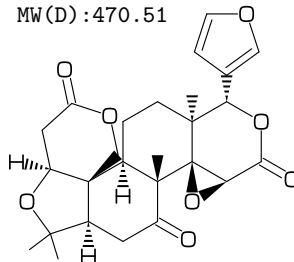
NO.1 Chlorophyll a

FM(C) : $\text{C}_{55}\text{H}_{72}\text{MgN}_4\text{O}_5$
MW(C) : 893.4884
MW(D) : 893.49



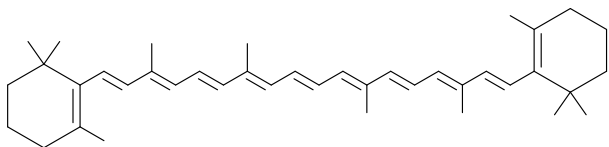
NO.2 Limonin

FM(C) : $\text{C}_{26}\text{H}_{30}\text{O}_8$
MW(C) : 470.5113
MW(D) : 470.51



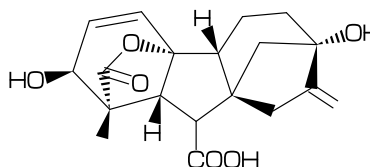
NO.3 beta-carotene

FM(C) : $\text{C}_{40}\text{H}_{56}$
MW(C) : 536.8722
MW(D) : 536.87



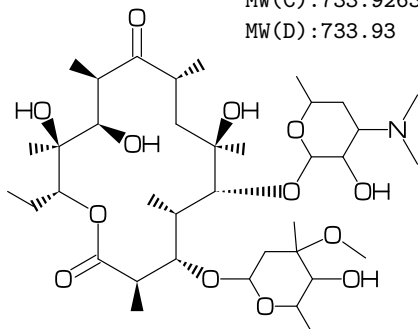
NO.4 Gibberellin A3

FM(C) : $\text{C}_{19}\text{H}_{22}\text{O}_6$
MW(C) : 346.3742
MW(D) : 346.37



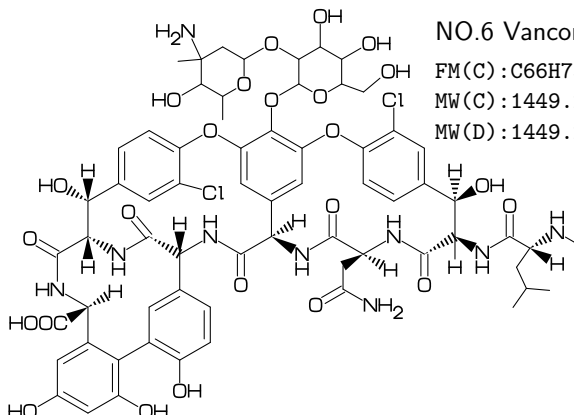
NO.5 Erythromycin

FM(C) : $\text{C}_{37}\text{H}_{67}\text{N}_5\text{O}_{13}$
MW(C) : 733.9263
MW(D) : 733.93



NO.6 Vancomycin

FM(C) : $\text{C}_{66}\text{H}_{75}\text{Cl}_2\text{N}_9\text{O}_{24}$
MW(C) : 1449.253
MW(D) : 1449.25



NO.7 Maitotoxin

FM(C) : $\text{C}_{164}\text{H}_{256}\text{Na}_{20}\text{O}_{68}\text{S}_2$
MW(C) : 3425.854
MW(D) : 3425.86

